

Lichfield Camera Club is 70 Years Old!

By Graham Slight, Vice-Chairman of the Lichfield Camera Club

Lichfield Camera Club was originally founded in 1946 under the name of The Lichfield Photographic Society, so we have now been going for 70 years! The club originally met in a room above a draper's shop, in the building which is now the HSBC Bank in Lichfield. In the early days the club had around 20 members. In the intervening period the club has amalgamated with other local photographic clubs and has moved location on numerous occasions.

In September 2015 the Club moved to excellent new premises in the Lichfield Methodist Centre, Backcester Lane, Lichfield, WS13 6JH. We are a friendly club, with a membership of around 60, which encourages members of all abilities to improve their image taking and processing techniques. The type of camera which you own is not critical, it is how you use it that matters. All of our members were beginners once and a number are now highly qualified and respected in photographic circles.

We meet every Wednesday evening between 7.30pm and 10pm, from September to June, and new members/visitors are very welcome. We meet, in the Methodist Centre, for a programme of talks by external presenters, monthly internal competition evenings, external competitions against other Midlands' clubs and practical demonstration evenings.

On the first Monday of each month we also run tutorial workshops covering image critique/advice and Photoshop techniques. This is particularly useful in helping the less experienced photographers to improve their skills levels so that they feel confident to enter the club competitions.

Details of the programme of events and other information on the club can be found on our website www.lichfieldcameraclub.org

Over the past few years the club has taken on a number of commissions for local organisations such as:

- Lichfield Cathedral – At the invitation of the Dean and Chapter of Lichfield Cathedral, members of the club photographed the life of the Cathedral over a thirteen month period. The club was granted access to the Cathedral and environs with a brief to document the people and events involved in a typically busy year of activity at the Cathedral. Eighteen members took part in this challenging project.

- Staffordshire Wildlife Trust – over the period of a year we documented the flora and fauna at the majority of Staffordshire Wildlife's reserves around the county as well as some of the events hosted by the SWT during the year.

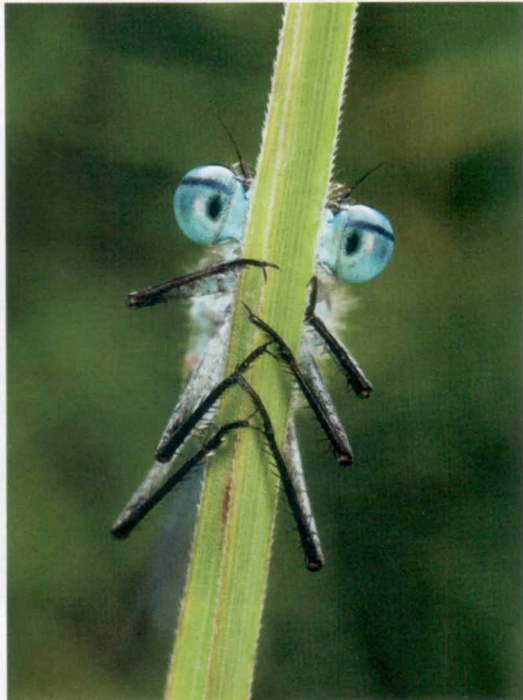
- Lichfield in Bloom – we photographed the judging of Lichfield in Bloom at locations around the City as well as providing the photographs for the Lichfield in Bloom 2017 Calendar.

These commissions encourage members to photograph topics which they may not normally attempt.

The club also holds two annual exhibitions where our work is on display to the public. In December we hold our Winter Exhibition in the Guildhall in Lichfield and in July we hold our Summer Exhibition at the Chasewater Innovation Centre.

For those who are interested, we also encourage and support members who wish to gain distinctions in the Royal Photographic Society and/or the Photographic Alliance of Great Britain.

So, whether you wish to improve your photography or just attend presentations by experts, we would be delighted to see you, just give us a try.



Peekaboo by Darron Matthews



Lichfield Cathedral by Richard Ell



Beacon Park by Sandra Morgan



Hope Valley Sunrise by Sue Freeman



Skimming the Trees by Graham Slight